



COMMON INFECTIONS CAN LEAD TO SEPSIS.



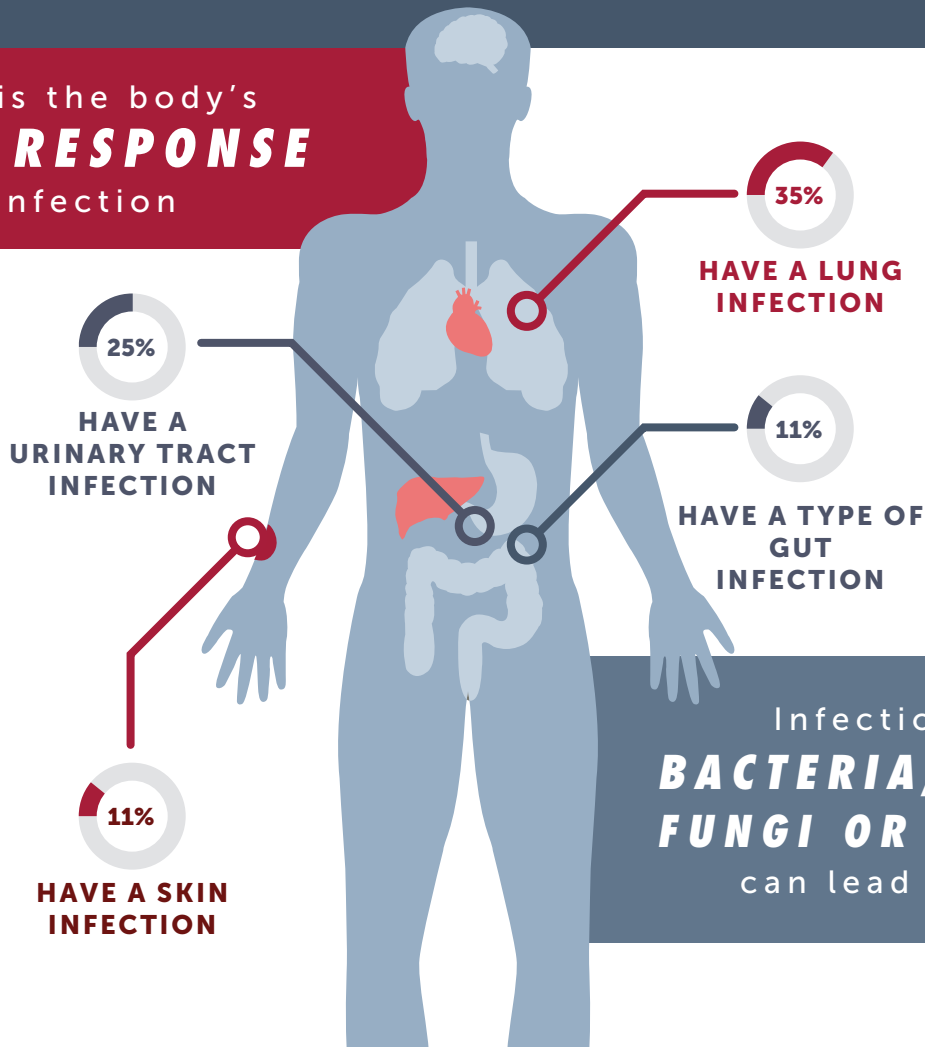
Sepsis is the body's
TOXIC RESPONSE
to infection

SIGNS

Systemic
Inflammatory
Response (SIRS):
P>90, RR>20,
T>38<36;

END ORGAN DAMAGE

GCS<;15, no urine
output, lactate>2,
high glucose
O2 sat<90%,
ETCO2<26



TREAT

IV, IVF, CHECK
ETCO2 &
GLUCOSE

ALERT THE HOSPITAL

"I am concerned
about sepsis"

Infections from
**BACTERIA, VIRUSES,
FUNGI OR PARASITES**
can lead to sepsis.

ONE IN THREE HOSPITAL DEATHS
ARE CAUSED BY SEPSIS



SEPSIS ALLIANCE

Suspect Sepsis. Save Lives.

FOR MORE INFORMATION, PLEASE VISIT SEPSIS.ORG/FIRSTRESPONSE.